



The most productive cutting tables for packaging, wide format signage & display production

THE KONGSBERG C SERIES



KONGSBERG
Precision Cutting Systems

Kongsberg C

HIGHEST PERFORMANCE, DELIVERED BY THE INDUSTRY'S MOST SOLID PLATFORM

Kongsberg C Series is built for the highest performance, redefining the possibilities of digital finishing.

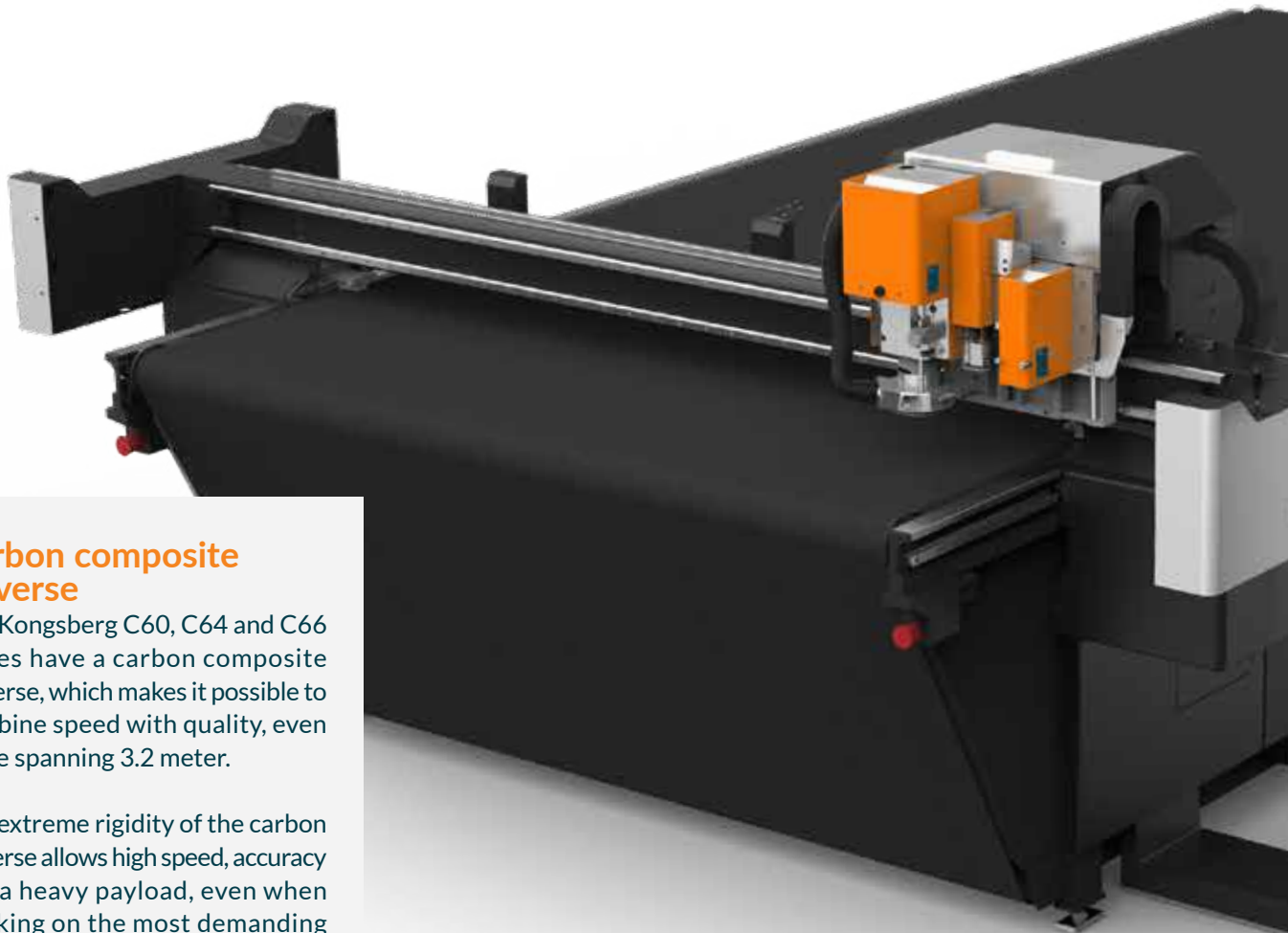
The Kongsberg C offers speed (100 m/min - 66 in/sec) and acceleration (up to 1.7 G) with quick and precise tool movements, making high quality digital production possible, even under the tightest deadlines.

The Kongsberg C cutting table delivers an iconic performance that is made possible by state of the art, rock solid engineering. The cutting table utilizes aerospace technology, combining an aluminum composite tabletop, a rack & pinion drive system and dynamic table mapping. These features all ensure that the table provides the greatest cutting accuracy and consistency.

Carbon composite traverse

The Kongsberg C60, C64 and C66 tables have a carbon composite traverse, which makes it possible to combine speed with quality, even while spanning 3.2 meter.

The extreme rigidity of the carbon traverse allows high speed, accuracy and a heavy payload, even when working on the most demanding materials.



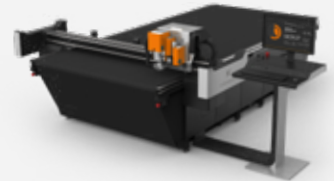
Introducing: Kongsberg C Edge

Exceptional quality at a remarkable price. Step up your productivity with its high speed (75 m/min) and acceleration (1G), and astound your customers with impressive, high quality results and fast turnarounds.

As your company grows, the Kongsberg C Edge evolves with you and can be easily upgraded in both speed and acceleration.



Kongsberg C20



Kongsberg C24 /
Kongsberg C Edge 24



Kongsberg C44 /
Kongsberg C Edge 44



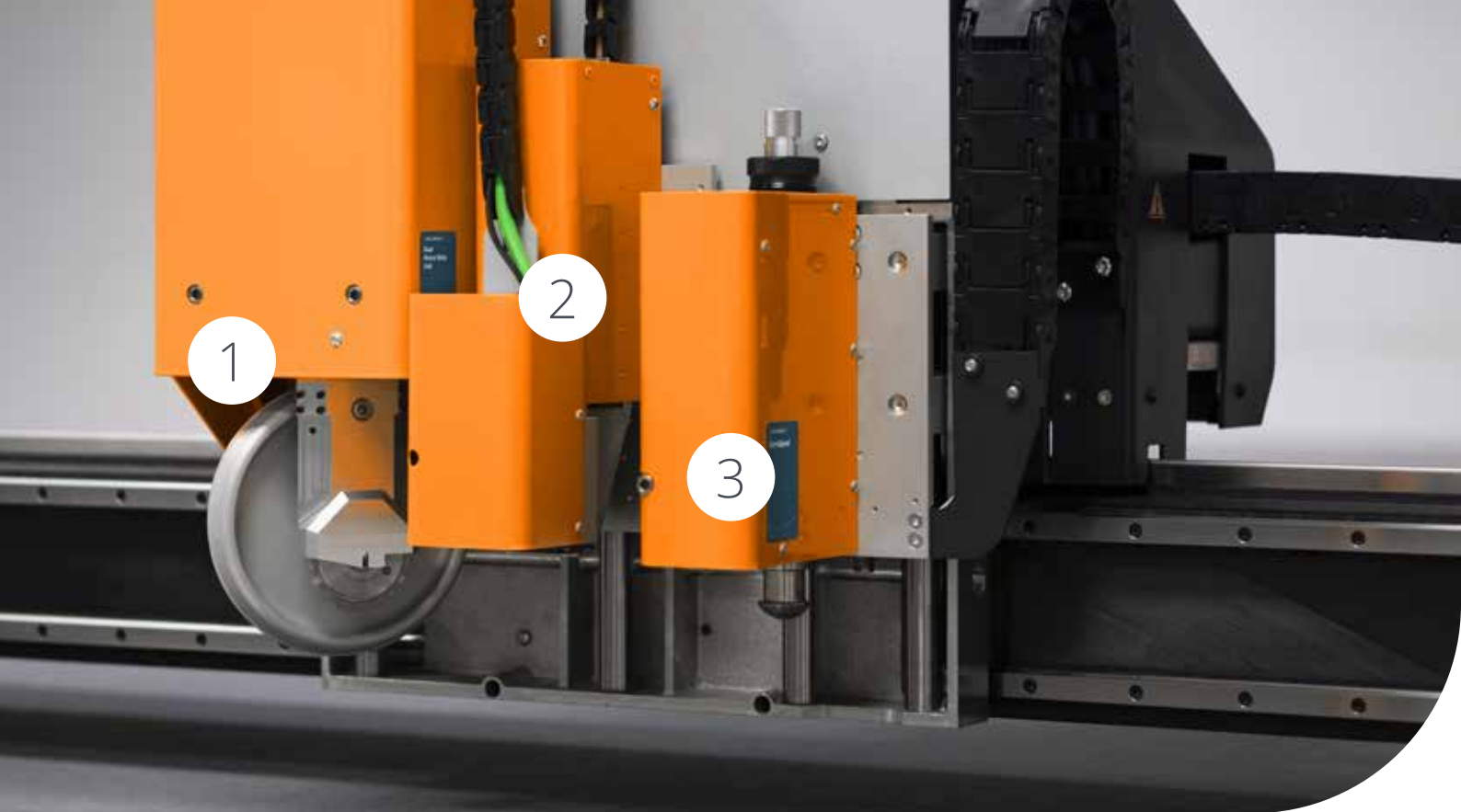
Kongsberg C60 /
Kongsberg C Edge 60



Kongsberg C64 /
Kongsberg C Edge 64

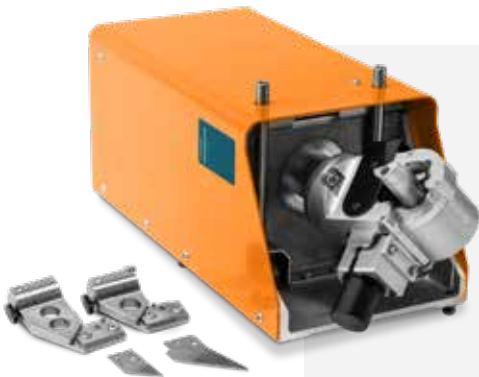


Kongsberg C66



REDEFINING THROUGHPUT WITH HIGH PERFORMANCE TOOLING

The Kongsberg C performance range works with a wide variety of optional tool units. Multiple tool combinations are available during production, depending on the materials you want to process. The tooling system includes a material thickness probe and an optional camera for registering printed and unprinted material. The Kongsberg C performance tooling increases throughput and quality.



VariAngle Tool

The unique VariAngle Unit is a V-notch cutting tool that cuts at any angle between 0° and 60°.

- › V-notch cutting with different angles no longer needs operator intervention. It's a huge time saver.
- › Unlocks new creative potential for designers of POP displays.
- › Minimized operator handling eliminates safety issues.

1. Heavy Duty Tool Position

The Heavy Duty Tool can handle:

- › Large-size crease wheels for recycled liners and heavy duty boards
- › V-notch inserts for triple wall corrugated, honeycomb boards and solid board
- › 50 kg down force for the best creasing and perforating results
- › Straight-blade knife insert for long, straight cuts in heavy-duty boards
- › Crease blade insert for polypropylene boards
- › High-Power Milling Unit
- › Foam Cutting Unit
- › The optional Dual Heavy Duty Unit combines two independent wheels in one heavy-duty unit. This unit makes it possible to cut, crease and perforate a single job without the need to change tools.

2. Insert Position

- › Drill Tool Insert
- › Ballpoint Pen Insert
- › FiberTip Tool

3. Fast Tool Position

- › High-frequency VibraCut Tool, VibraCut Tool and CorruSpeed Tool
Reciprocating and static tools for corrugated board, ranging from micro flute to triple wall, paper core boards, foamboards and thin foam panels
- › Hi-Force Knife Tool, Psaligraphy Tool and RM Knife Tool
Static knife tools for compact materials; paper, folding carton, solid board and synthetic sheets such as PVC, polypropylene, polycarbonate, etc.
- › PressCut Tool
Tool for adhesive vinyl, with programmable blade pressure
- › RotaCut Tool
Motor-driven, rotating knife tool for textile materials
- › Braille Tool
Tool for making braille signs, works together with milling tool

2D or 3D shapes or structures in any material. Creativity is the only limit when producing on a Kongsberg C cutting table.



Rigid signage



Display



Corrugated packaging



Folding carton



Plastic corrugated



Flexible signage

INCREASED THROUGHPUT BY SMART AUTOMATION



MultiZone production

MultiZone production allows you to load two sheets at the same time and maximize the production capacity on your Kongsberg cutting table without expensive automation add-ons.

The MultiZone Operation Mode enables the operator to prepare one zone while the table processes the other, with automatic change-over when one zone is completed, vastly increasing overall productivity and throughput.

An optional zone control panel can be mounted on the table's side cover, providing a time-saving way of acknowledging that the zone is ready for production and also manual vacuum hold-down control.

Barcode production

Ensures consistent production, final quality and is especially recommended when several unique jobs are lined up. The camera will read the barcode automatically and apply the correct tooling and production settings.

- > QR
- > Data Matrix
- > Code39
- > Multiple stacks support
- > MultiZone support



Sheet automation

The Kongsberg Automate Board Feeder and Stacker is an easy to use pallet-to-pallet material handling solution. With a stack height at 915 mm/36 in and quick automatic load cycles it's the optimal solution for production in all typical packaging and display materials. Combined with the Underside camera, you are assured of full registration on every sheet leaving no room for error.

We understand that quality is paramount throughout your production. The Kongsberg board feeder eliminates the chance of damage encountered with manual handling, and ensures that the print moves to the cutting table with precision and care.





Robotic automation brings a new world of opportunities

Robotic material handling brings cutting edge industrial automation to the shop floor. The robotic arm loads and unloads material automatically with perfect alignment to support pallet-to-pallet production and runs unattended.

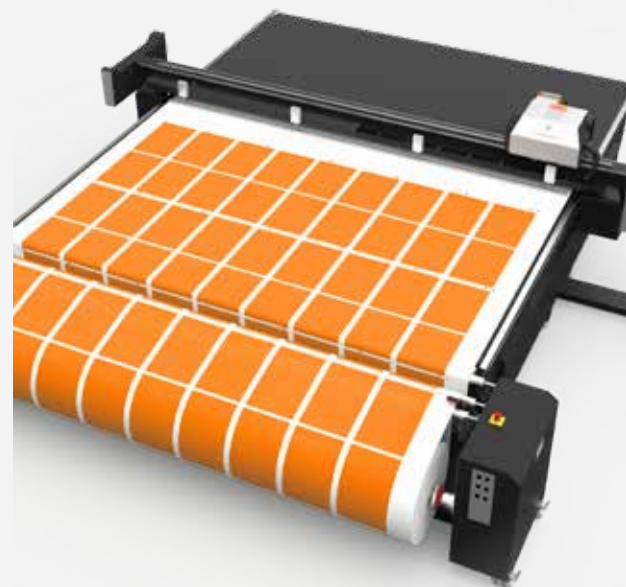
The grippers are able to work with a wide range of materials and the cutting uptime is maximized to its full potential.

Cells can be fully configured to your needs. Future expansion is always an option without the need for heavy re-investment when your business demands more.

The Motorized Roll Feeder for soft signage

The roll feeder ensures consistent feeding of material onto the table's conveyor belt, even if the roll is imperfectly rewound after printing.

With capacity for large, heavy rolls and handling mechanisms for challenging substrates, the motorized roll feeder is vital to achieve uninterrupted production with high quality output. Combined with our Take Up Unit true roll-to-roll production can be fully supported.



TECHNICAL SPECIFICATIONS

	C20	C24	C44	C60	C64	C66	
Work area	1680 x 1430 66x56	1680 x 3200 66 x 126	2210 x 3200 87 x 126	3210 x 1600 126.37 x 63	3210 x 3200 126.37 x 126	3210 x 4800 126.37 x 189	mm in.
Work area, MZ production, standard tabletop	n/a	1680 x 1450 66 x 57	2210 x 1450 87 x 57	n/a	3210 x 1450 126 x 57	3210 x 2210 126 x 87	mm in.
Max. material width, w/o conveyor feed	1740 x 1900 68 x 75	1740 x 3700 68 x 146	2270 x 3700 89 x 146	3330 x 2125 131 x 83½	3330 x 3730 131 x 147	3330 x 5330 131 x 210	mm in.
Max. material width, w/ conveyor feed	1680 66	1680 66	2210 87	3210 126½	3210 126½	n/a	mm in.
Overall dimensions incl. workstation	3600 x 2300 142 x 91	3600 x 3900 142 x 154	4100 x 3900 161 x 154	5100 x 2320 201 x 91½	5100 x 3920 201 x 154½	5100 x 5520 201 x 217	mm in.
Overall dimensions excl. workstation	2760 x 2300 109 x 91	2760 x 3900 109 x 154	3260 x 3900 128 x 154	4260 x 2320 168 x 91½	4260 x 3920 168 x 154½	4260 x 5520 168 x 217	mm in.
Weight	800 1765	600 1325	800 1760	800 1760	1300 2870	1750 3960	kg lbs
Max. speed C	100 66						m/min IPS
Max. speed C Edge	75 49					n/a	
Max. acceleration C	1.72 G	1.72 G	1.65 G	1.57 G	1.57 G	1.57 G	
Max. acceleration C Edge	1G	1G	1G	1G	1G	1G	
Vacuum sections	4	8	8	4	8	8	
Traverse clearance (excl. cutting underlay)	70 2.75						mm in.

Australia GMS Pacific 3/352 Ferntree Gully Road, Notting Hill Melbourne 3168
Email: info@gmspacific.com Ph: +61 3 9535 9777

